

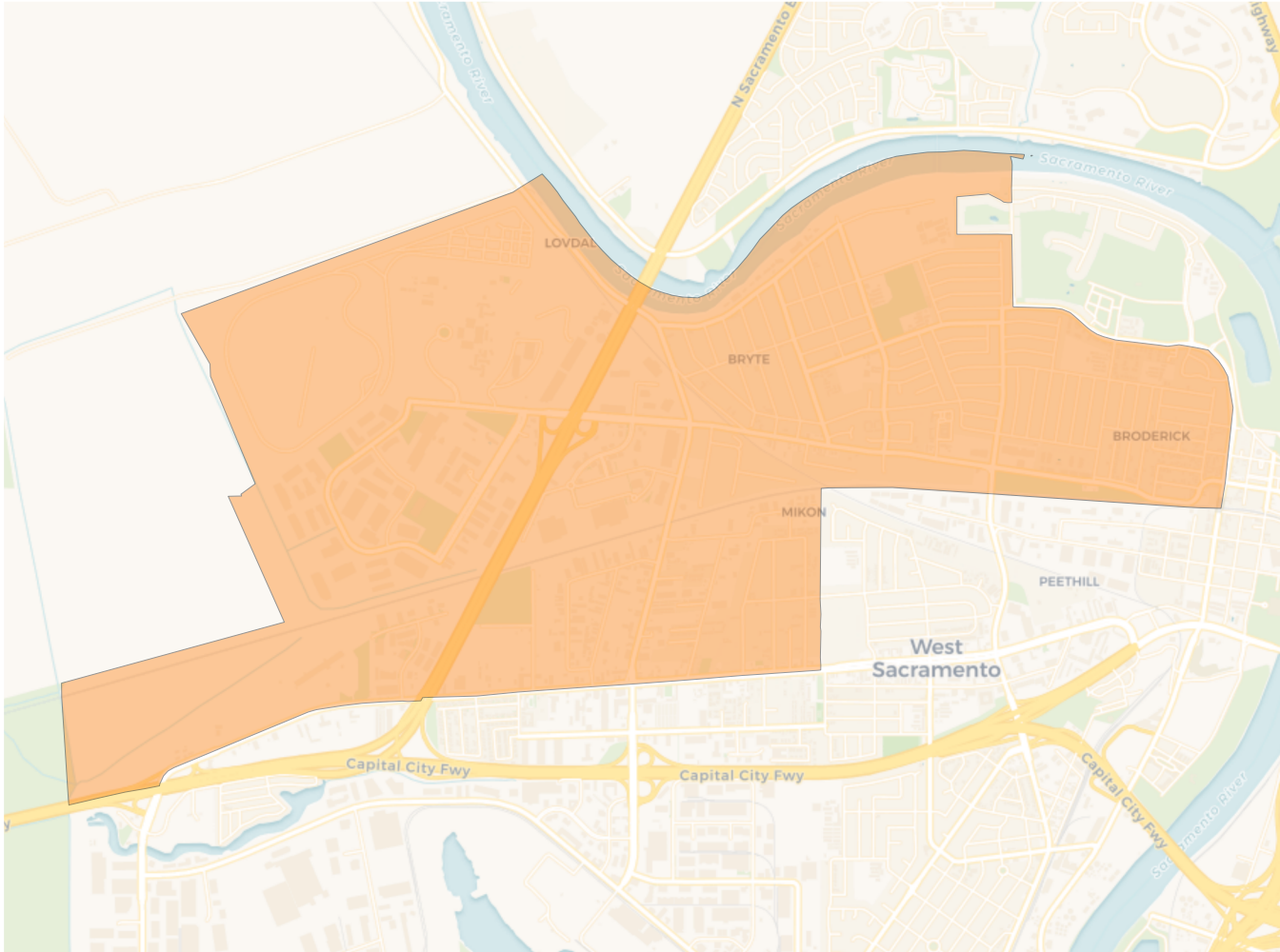
2020 Census

	1	2	3	4
Population	13,484	13,888	13,457	13,248
Deviation	-35	369	-62	-271
Deviation %	-0.3%	2.7%	-0.5%	-2.0%
Other	5,687	7,029	6,958	7,412
Other %	42.2%	50.6%	51.7%	55.9%
Latino	6,377	4,679	3,303	2,965
Latino %	47.3%	33.7%	24.5%	22.4%
Asian	961	1,457	2,356	2,370
Asian %	7.1%	10.5%	17.5%	17.9%
Black	459	723	840	501
Black %	3.4%	5.2%	6.2%	3.8%

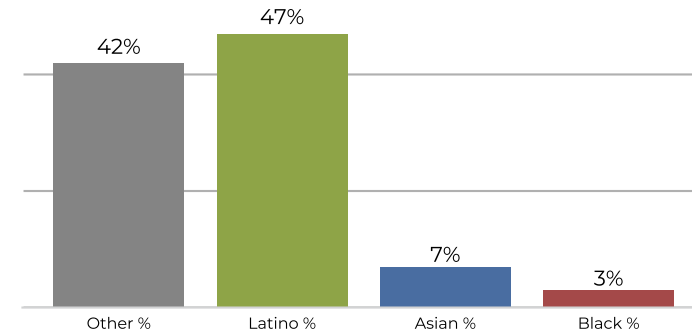
Citizen Voting Age Population (CVAP)

	1	2	3	4
Total CVAP	7,794	8,600	8,370	8,780
Other CVAP	4,098	5,339	5,265	5,947
Other CVAP %	52.6%	62.1%	62.9%	67.7%
Latino CVAP	2,456	2,135	1,492	1,062
Latino CVAP %	31.5%	24.8%	17.8%	12.1%
Asian CVAP	663	490	1,065	1,462
Asian CVAP %	8.5%	5.7%	12.7%	16.7%
Black CVAP	577	636	548	309
Black CVAP %	7.4%	7.4%	6.5%	3.5%

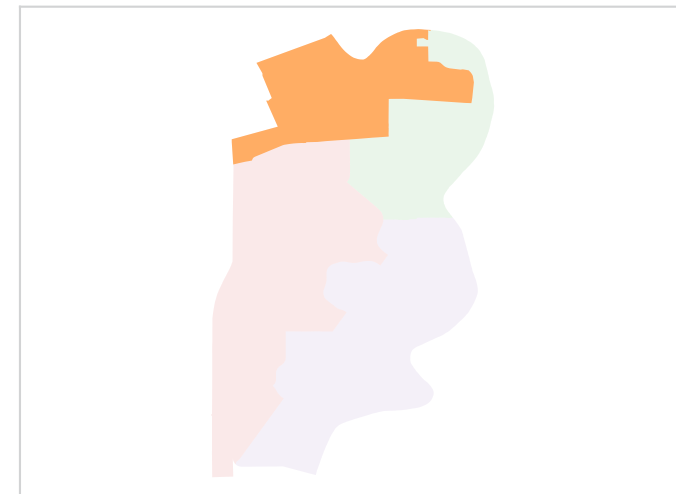
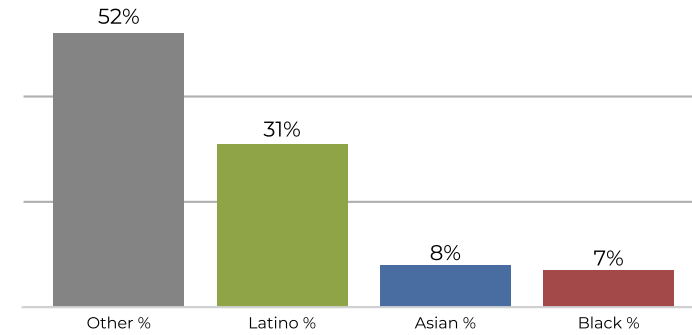
District 1



2020 Census

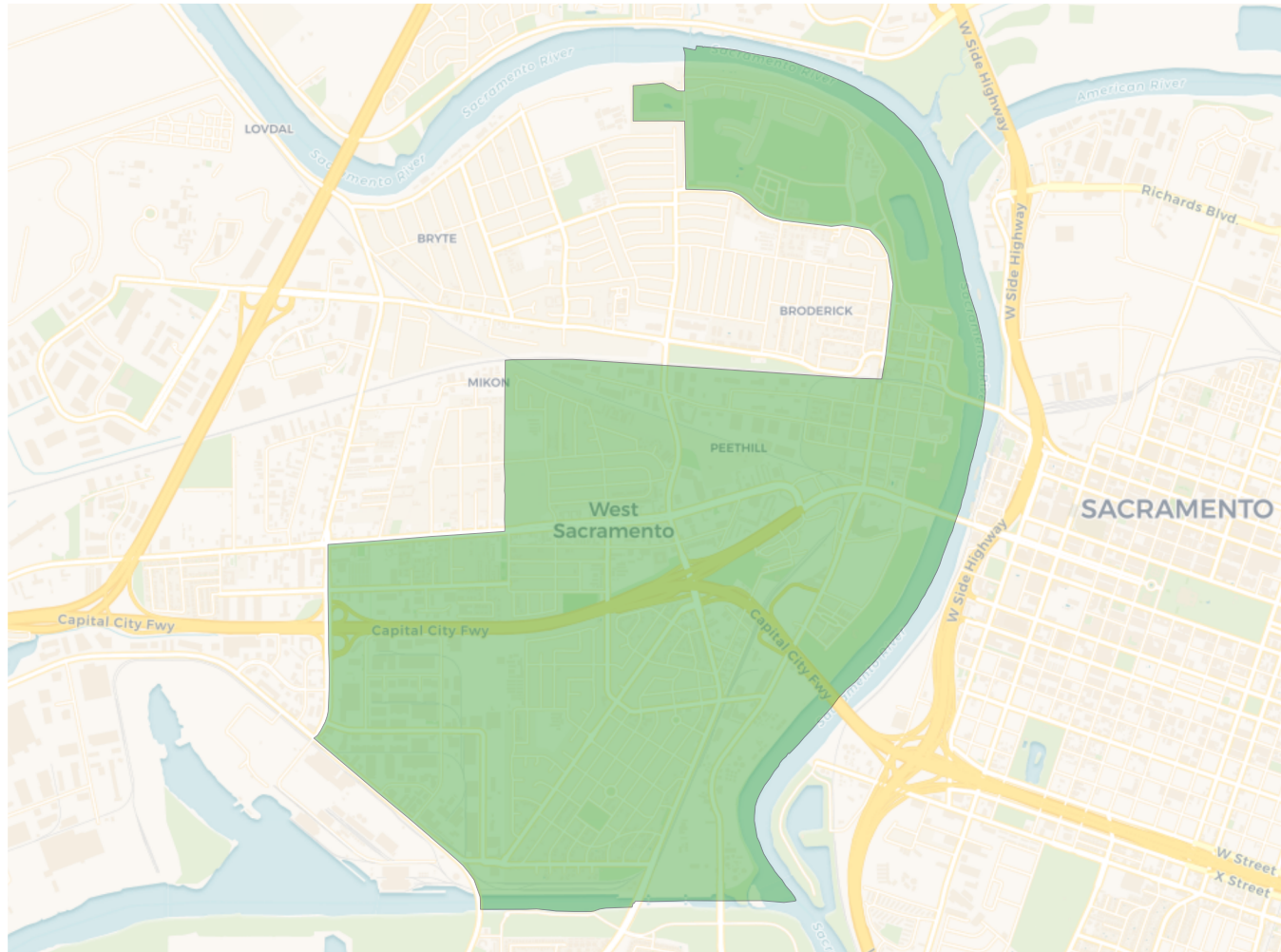


Citizen Voting Age Population

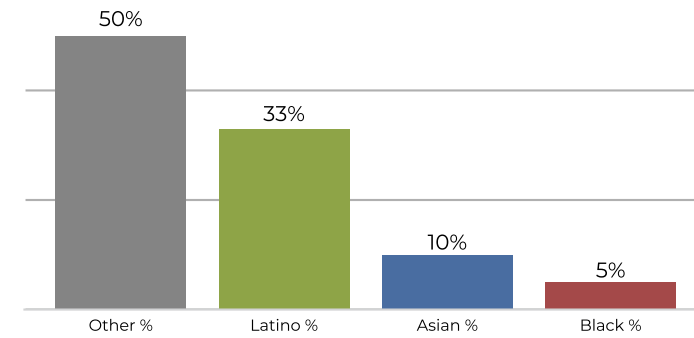


Population	Deviation	Deviation %	Other	Other %	Latino	Latino %	Asian	Asian %	Black	Black %
13,484	-35	-0.3%	5,687	42.2%	6,377	47.3%	961	7.1%	459	3.4%
Total CVAP	Other CVAP	Other CVAP %	Latino CVAP	Latino CVAP %	Asian CVAP	Asian CVAP %	Black CVAP	Black CVAP %		
7,794	4,098	52.6%	2,456	31.5%	663	8.5%	577	7.4%		

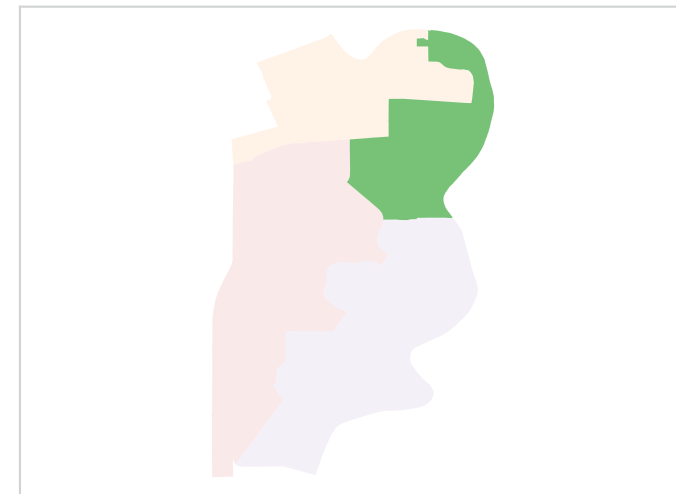
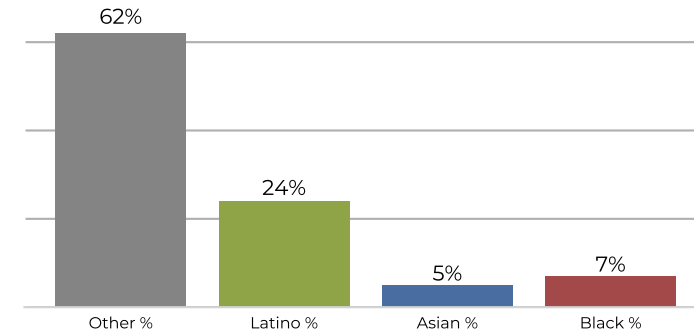
District 2



2020 Census

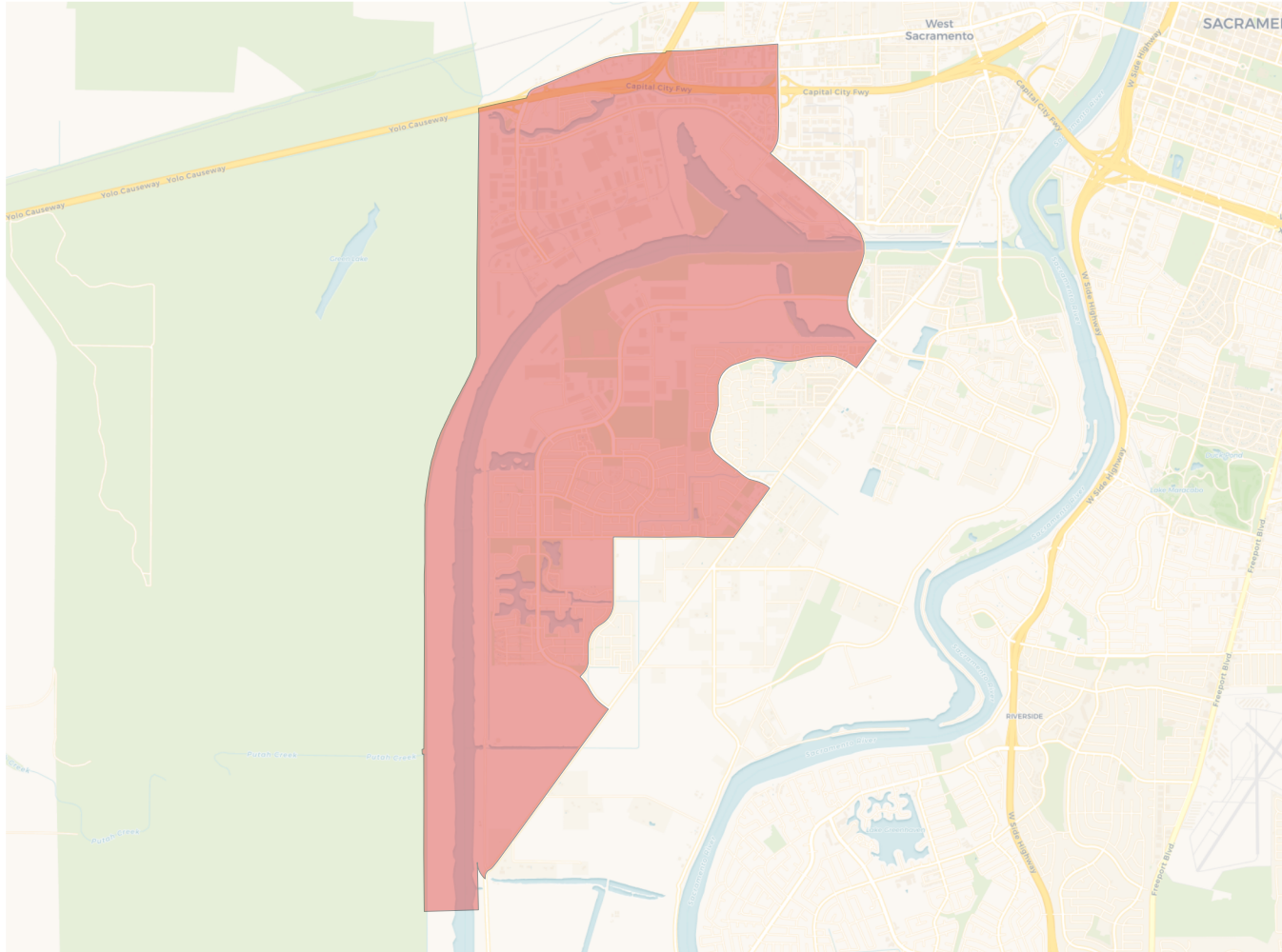


Citizen Voting Age Population

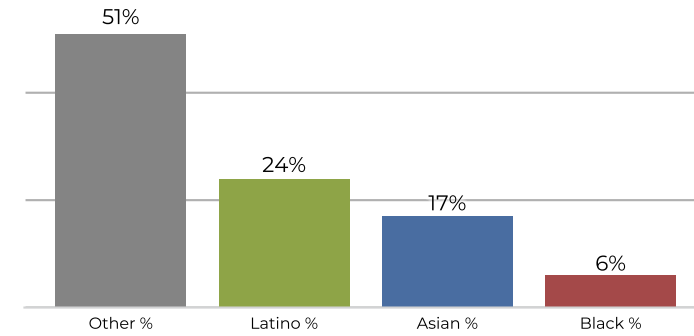


Population	Deviation	Deviation %	Other	Other %	Latino	Latino %	Asian	Asian %	Black	Black %
13,888	369	2.7%	7,029	50.6%	4,679	33.7%	1,457	10.5%	723	5.2%
Total CVAP	Other CVAP	Other CVAP %	Latino CVAP	Latino CVAP %	Asian CVAP	Asian CVAP %	Black CVAP	Black CVAP %		
8,600	5,339	62.1%	2,135	24.8%	490	5.7%	636	7.4%		

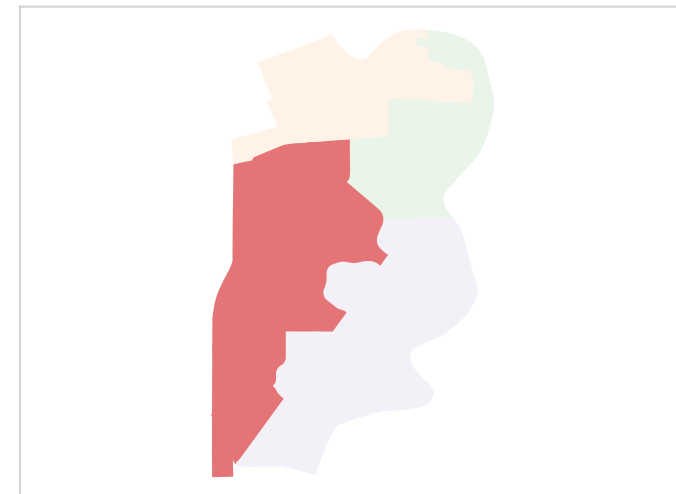
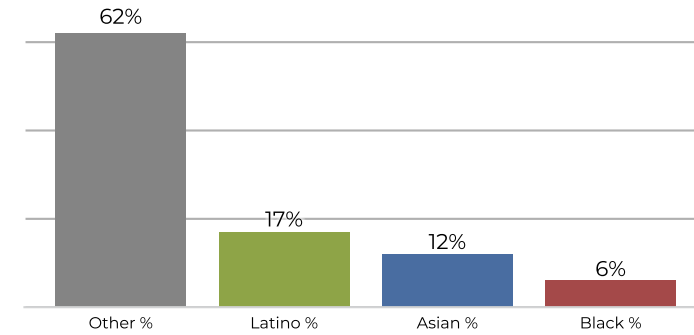
District 3



2020 Census

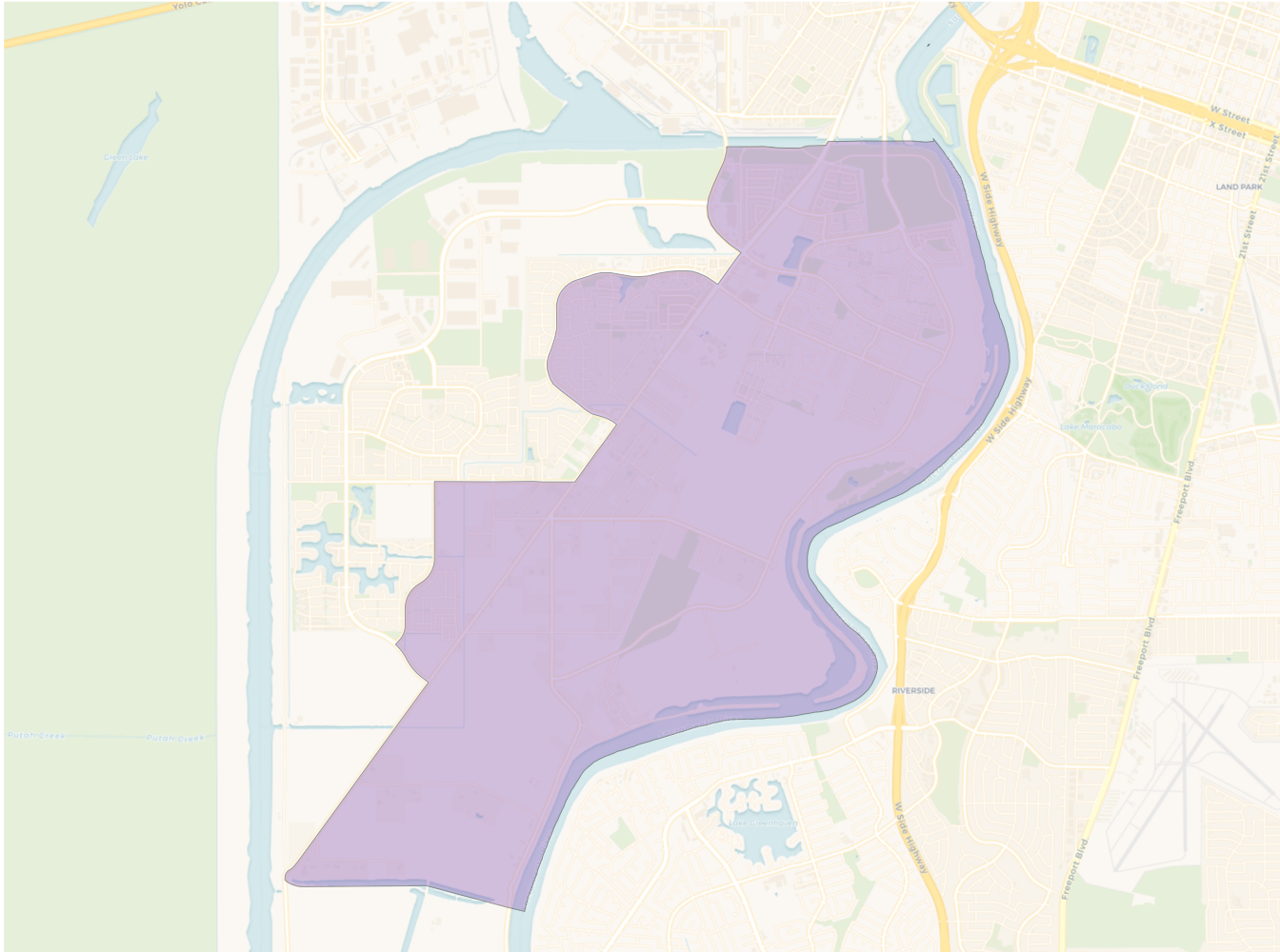


Citizen Voting Age Population

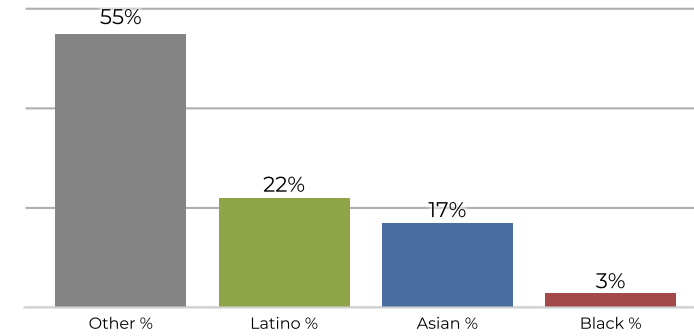


Population	Deviation	Deviation %	Other	Other %	Latino	Latino %	Asian	Asian %	Black	Black %
13,457	-62	-0.5%	6,958	51.7%	3,303	24.5%	2,356	17.5%	840	6.2%
Total CVAP	Other CVAP	Other CVAP %	Latino CVAP	Latino CVAP %	Asian CVAP	Asian CVAP %	Black CVAP	Black CVAP %		
8,370	5,265	62.9%	1,492	17.8%	1,065	12.7%	548	6.5%		

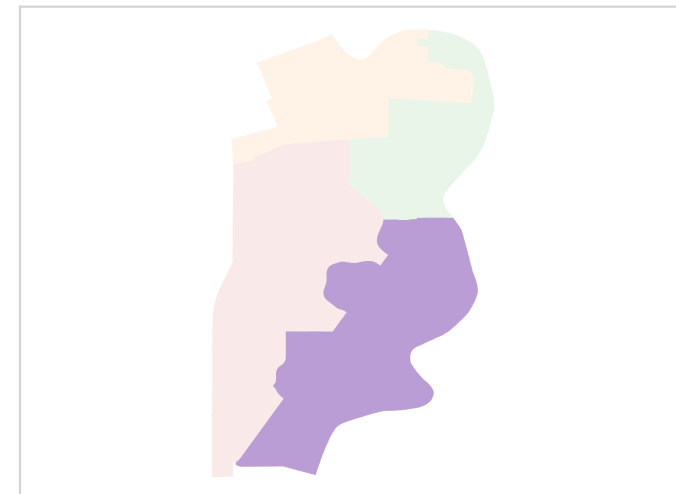
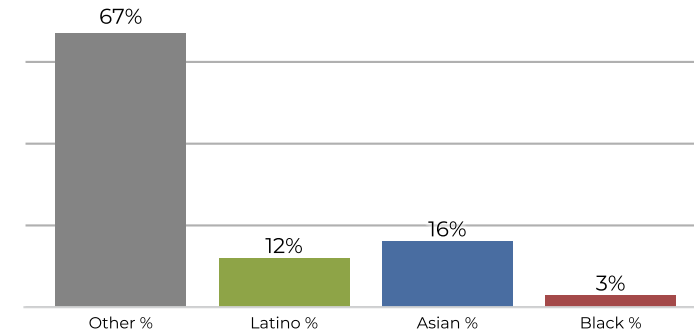
District 4



2020 Census



Citizen Voting Age Population



Population	Deviation	Deviation %	Other	Other %	Latino	Latino %	Asian	Asian %	Black	Black %
13,248	-271	-2.0%	7,412	55.9%	2,965	22.4%	2,370	17.9%	501	3.8%
Total CVAP	Other CVAP	Other CVAP %	Latino CVAP	Latino CVAP %	Asian CVAP	Asian CVAP %	Black CVAP	Black CVAP %		
8,780	5,947	67.7%	1,062	12.1%	1,462	16.7%	309	3.5%		